

# North American Inclusion Month

# NAIM

BUILDING AN INCLUSIVE JEWISH COMMUNITY

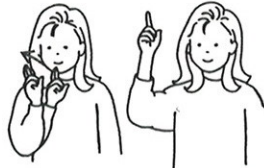
## Lighting Shabbat Candles

SHABBAT BEGINS WITH THE LIGHTING OF CANDLES

START



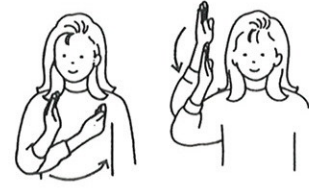
Boruch ברוך  
Blessed



Atoh אתה  
Are You



Ado-noy ה'  
Lord



Elo-haynu אלקינו  
Our God



Melech מלך  
King



Ho-olom העולם  
Of The Universe



Asher אשר  
Who



Made



Kidshonu קדשנו  
Us



Holy



With



Bmitzvosov במצותיו  
His Commandments



And



Vtzivonu וצונו  
He Commanded Us



L'hadlik להדליק  
To Light



Ner נר  
The Candles



Shel Shabbat של שבת  
Of Shabbat



For more information contact:  
Yachad, The National Jewish Council for Disabilities



212.613.8229 | [naim@ou.org](mailto:naim@ou.org) | [naim4inclusion.org](http://naim4inclusion.org)